

RacloFlex™ Sw



Belt scraper / Auto-adaptative curved mono-blade secondary belt scraper



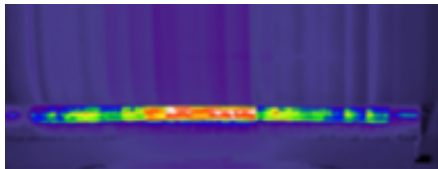
WHY CHOOSE THE RACLOFLEX™ SW ?

A unique and innovative scraper

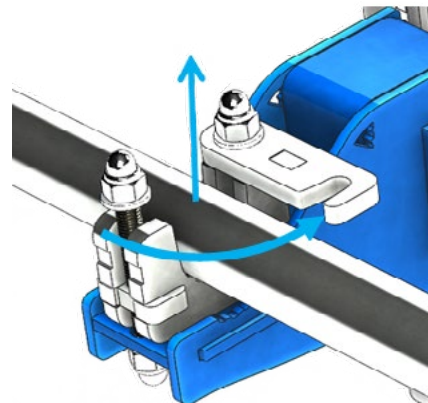
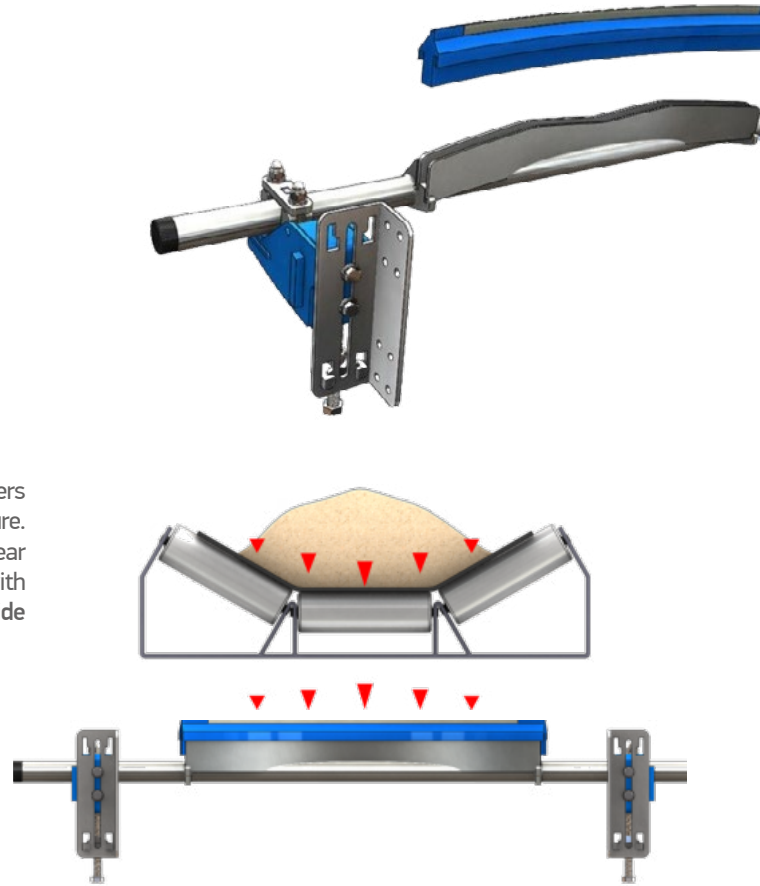
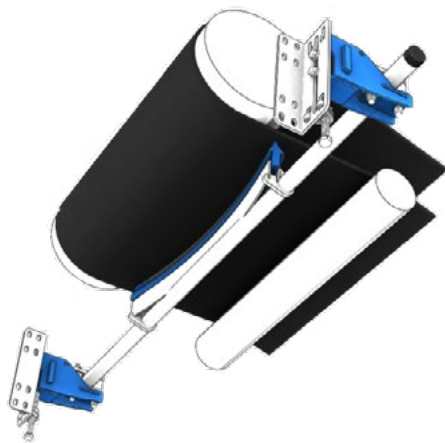


An ingenious system that adapts to your belt

The **RacloFlex™ Sw** has a blade with two inserts that transfers the lateral external pressures to an increased central pressure. Therefore, the scraper adapts automatically and compensates its wear continuously. This guarantees maximum efficiency and lifetime, with minimum maintenance. Standard features includes tungsten carbide 3x15mm high quality 93 HRa.



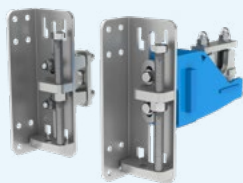
Thermal imaging system for scraping pressure



ADVANTAGES

- Easy installation
- Longer lifespan
- Anti-clogging design
- Minimum maintenance
- Fast opening bearing
- Easy and compact
- Galvanised metal parts
- Very high cleaning performance
- Curved blade attached without adjustment
- Very few screws
- Retractable pressure rod
- Solid mechanism for a reasonable weight
- Graduated shock absorbers, with cogs and non-return

OPTIONS, ACCESSORIES AND VERSIONS



Pulling pressure

Allows the Scraper pressure to be adjusted from above and within the location angle.



Adjusting bracket

Enables you to cut and weld the support tube to reposition the blade with respect to the support mounts.



Special «MultiTool key»

Performs all the necessary functions for the manipulation and settings of the scraper.

General information for the RacloFlex™ Sw

Blade Quality:

Tungsten Carbide : 93 HRA 3x15mm

Or- Tungsten Carbide : 93 HRA 5x20mm

Or- Wear resistant Polyurethane : 25mm³ svt DIN53516-10N

Working position:

Scraping angle = 90° (see notice)

« spoon » blades and front shock absorbers

Surface treatment:

All electro-galvanized steel pieces or painted + A2 grade Stainless bolts

Temperature:

0° / + 50° C

pH Range:

3 to 11

Maximum speed:

SW 1 way = 3 m/s

SW -HD 1 way = 5 m/s

Avoid exposure to:

Impact and staples on tungsten carbide and ceramic

Hot water steam : special quality available

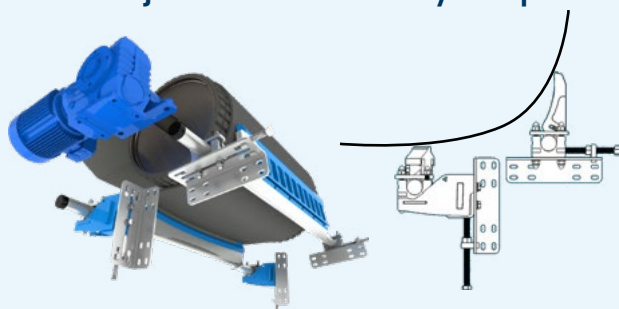
Corrosive atmosphere : Stainless Steel is possible on all or part

Uncontrolled fouling on entire scraper

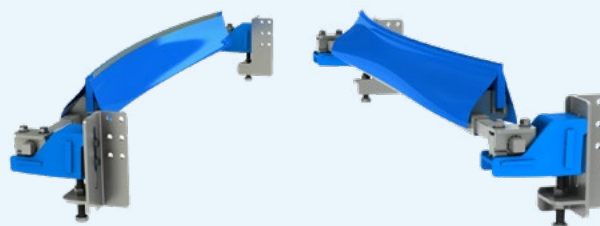
Belt, mm	500	650	800	1000	1200	1400	1600	1800	2000	2200
Belt, inch	18	24	30	36	48	54	62	72	78	84
Scraping width SW, mm	500	630	750	950	1150	1300				
Tungsten width SW, mm	395	520	640	800	960	1120				
Scraping width SW-HD, mm				950	1150	1300	1500	1700	1900	2100
Tungsten width SW-HD, mm				840	1040	1200	1400	1600	1800	2000

For any request of a scraper to suit greater than 2200 mm belt, the scraper will be manufactured to order.

Typical application of RacloFlex™ Z² in conjunction with a Primary Scraper



RacloFlex™ Sw-HD



Heavy version **RacloFlex™ Sw-HD** recommended for belts from 1400 to 2200 : Tungsten carbide 5x20, big flexible profiles and reinforced mechanism.

*Registered trademark, all rights reserved



MLT Conveyor Solutions Expert

More than 70 years of innovation
at your service



www.mltgroup-conveyor.com - info@mltgroup-conveyor.com