

RacloFlex™  HD



Belt scraper / Primary multi-blade belt scraper
with automatic spring tensioner



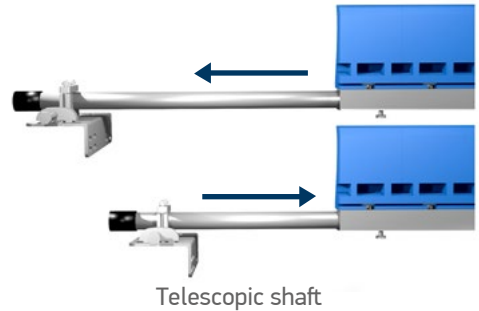
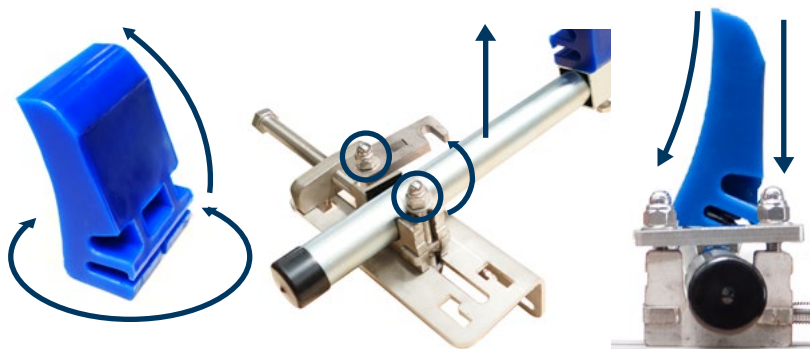
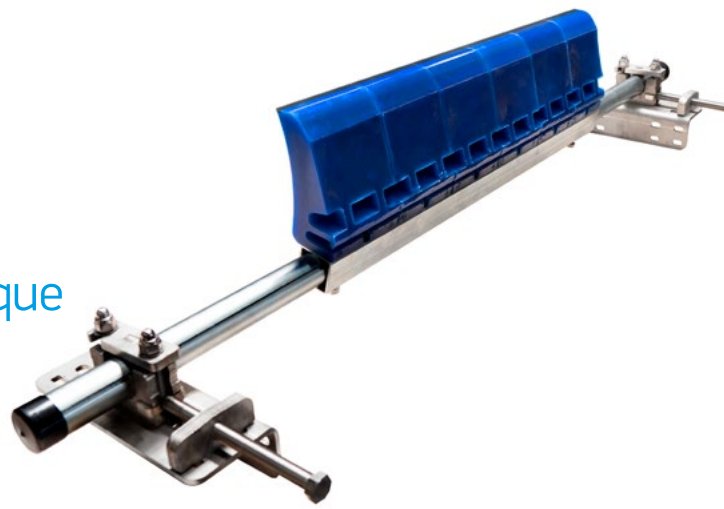
WHY CHOOSE THE RACLOFLEX™ Z² HD?

A multi-blade primary scraper unique on the market

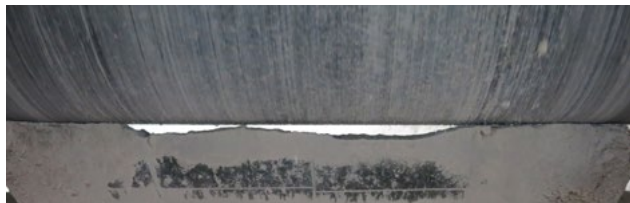
+ An ingenious system that adapts to your belt

Each anti-clogging profile blade is equipped with internal 2 springs and is quick connected on a pivot that allows slight rotation and easy change without adjustment.

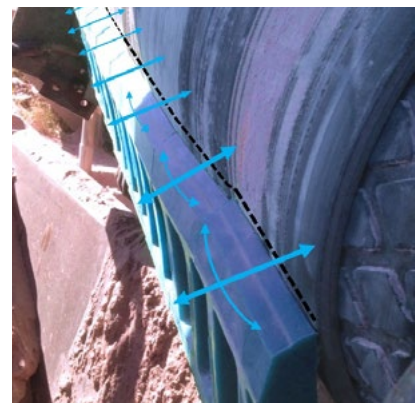
Its new telescopic shaft, designed to make it easier to install your scraper, offers greater strength than standard shafts on the market.



Telescopic shaft



The mono-blade products on the market do not fit the belt



The multi-blades of the RacloFlex™ Z² HD follow the profile of the belt and adapt perfectly

+ Integrated security: a priority for MLT

Instead of some mono-blade designs that can present risks during an incident, Racloflex™ Z² HD incorporates two innovative levels of safety, designed to protect both the equipment and the conveyor belt.

Our Racloflex™ Z² HD :

Security 1 : During an impact, the blade folds back into the drum, limiting potential damage.

Security 2 : The blade attachment system ensures controlled ejection, preventing scraper break and reducing the risk of damage to the belt.

With these devices, MLT offers a reliable and secure solution adapted to demanding environments.

ADVANTAGES

- Economic and adaptable
- High performance cleaning
- Galvanised metallic parts
- Notched bearing with fast opening system
- Multi-blade: only replace worn blades, increasing safety
- Various blades available
- Retractable pressure rod
- Adjustable on concave or convex belt
- Pressure via the integrated spring in each blade
- Automatic realignment of blades to ensure central wearing
- Telescopic shaft, more robust and quicker to install

OPTIONS, ACCESSORIES AND VERSIONS



Pulling pressure

Allows the Scraper pressure to be adjusted from above and within the location angle.



Special Qualities

A variety of blade qualities available for any type of application.



Shift ring

Used to cut and weld the support tube to offset the blade from the supports. (included)

General information for the RacloFlex™ Z² HD

Blade quality:	Tungsten carbide : 93 HRA 3x10mm Or- Tungsten carbide : 93 HRA 5x10mm Or- Wear resistant polyurethane : 25mm ³
Shaft quality :	Square structure with round telescopic shaft
Working position:	Scraping angle = 90° at tangent (see notice)
Surface treatment:	All zinc-plated steel pieces + A2 grade Stainless bolts
Temperature:	-10° / + 50° C
pH range:	3 to 11
Maximum speed:	1 way = 3.5 m/s 2 ways = not recommended
Avoid exposure to:	Impact and staples on Tungsten carbide (Choose Polyurethane blades) Hot steam : special quality available Corrosive atmosphere : All or part stainless steel possible Paper, thread, fabrics and household waste Uncontrolled fouling on entire scraper

Belt, mm		400	500	650	800	1000	1200	1400	1500	1600	1800	1900	2000	2200	2400
Belt, inch		15	18	24	30	36	48	54	60	62	72	74	78	84	96
Scraping width, mm		378	504	630	756	882	1134	1260	1386	1512	1638	1764	1890	2016	2142
Number of blades		3	4	5	6	7	9	10	11	12	13	14	15	16	17
length scraper + shaft, mm	min	1200			1600			1638			2000			2800	
	max	1378	1304	1430	1556	1934	2186	2312	2438	2564	2690	2816	2942	3468	3594
Shaft diameter, mm		42.4													
Shaft square dimension, mm		50x50													

Two materials available to meet your needs

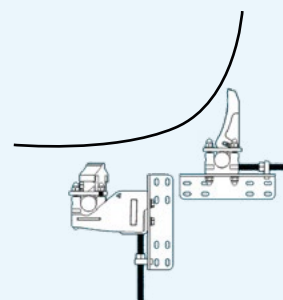
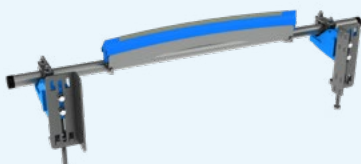
POLYURETHANE BLADES (PUR)

Affordable, polyurethane blades are less aggressive on worn strips, even where there are pronounced asperities.

TUNGSTEN BLADES (TNG)

Premium, tungsten blades are more efficient for belt maintenance, while offering greater resistance to aggressive and abrasive environments.

Typical application in conjunction with a RacloFlex™ Sw





RacloFlex™ **Z²** HD

MLT Minet Lacing Technology
More than 70 years of innovation
at your service



 **MLT GROUP**
Conveyor Solutions Expert

www.mltgroup-conveyor.com - info@mltgroup-conveyor.com