



MLT GROUP

Conveyor Solutions Expert

REPAIR SOLUTIONS



PATENTED PRODUCT

MADE IN FRANCE

For textile and steel cord belt



REPAIR RANGE

Easy, fast and definitive solution for your conveyor belt

THE QUICK-TO-INSTALL FIX'N GO®* REPAIR PATCH FOR TEXTILE CONVEYOR BELTS

FIX'N GO®* is an innovative and quick solution to repair rips or damages on conveyor belts.

Manufactured with a 50mm³ high abrasive resistance, **FIX'N GO®*** offers a higher protection against frictions and wear exceeding your conveyor belt specification, without impacting its flexibility, resistance to elongation and tensile strength.

By repairing your belt with **FIX'N GO®***, you have permanent solution without the need to replace it in the future.

The screws, perfectly integrated in the rubber, create a smooth surface without any roughness. This innovation ensures exceptional durability and optimal compatibility with all scrapers.



+ 66% OF RUBBER*

+ 2 THICKNESSES AVAILABLE PER MODEL*

0 SURFACE ROUGHNESS

100% COMPATIBLE WITH SCRAPERS INCLUDING TUNGSTEN BLADES

3^x FASTER THAN COLD BONDING*

*up to

The **FIX'N GO®*** repair patch :

- used for longitudinal rips, belt edge snags, impacts, holes,
- even allows two belts to be spliced longitudinally,
- can be used for multi-ply and monopy belts up to 1250 N/mm,
- is available in 2 versions: galvanized steel or stainless steel,



EXCLUDING CANADA, USA, MEXICO

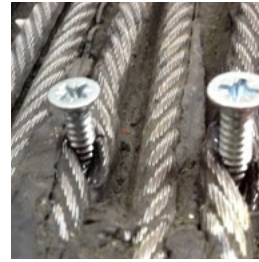
*Registered trademark, all rights reserved

SUPER-SCREW® : REPAIR AND PATCH FOR TEXTILES CONVEYOR BELTS AND STEEL CORD BELTS

For your rubber conveyor belts with steel cord or textile carcasses of high tension, **SUPER-SCREW®** flexible splice to screw can be also ideal as a repair patch (holes or tears in your belt). Self-drilling and self-tapping screws pinch the cables or go through them through the cable, providing new strength to the belt's carcass.

Screws allow the **SUPER-SCREW®** splice to be installed regardless of :

- the configuration of the conveyor,
- the conditions of access,
- weather conditions,
- temperature (from -80°C (-112°F) to 200°C (392°F) peak).



Model	35*		63*		80			100			125				180				
	4	4	4	6	8	6	8	10	6	8	10	8	10	12	14	8	10	12	14
Top thickness, mm (± 1 mm)	4	4	4	6	8	6	8	10	6	8	10	8	10	12	14	8	10	12	14
Rubber thickness, mm	2	2	2	4	6	3	5	7	3	5	7	2	4	6	8	2	4	6	8

* Very sharp screws can be ordered on request for steel cord belt

**MECHANICAL
VULCANISATION
IS BORN**

NEW SUPER-SCREW® SPLICE 2024

+65%

OF RUBBER*

+4

THICKNESSES AVAILABLE PER MODEL*

0

SURFACE ROUGHNESS

7^x

FASTER THAN HOT SPLICING

-25%

OF SCREWS*

100%

COMPATIBLE WITH SCRAPERS INCLUDING TUNGSTEN BLADES

ADVANTAGES

- Installation fast and easy (optimized maintenance time)
- Whatever the weather conditions
- Without expensive equipment
- Without pre-drilling
- The screws are self-drilling and self-tapping
- Wear and cut resistant
- Compatible with conveyor scrapers
- Leak proof
- Flexible
- Various rubber qualities available

EXCLUDING CANADA, USA, MEXICO

*Registered trademark, all rights reserved

OTHER TEMPORARY SOLUTIONS

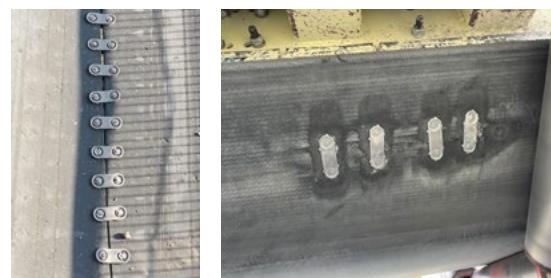
+ Bolt plate fasteners

Bolt plate fasteners allow conveyor belts to be spliced quickly and easily. Perfect for repair rips and splice conveyor belts with high operating tension.

Bolt plate fastener n°	1	140	190	11/2	2	21/2
Belt thickness, mm	5-11	5-11	8-14	11-17	14-21	19-25

Characteristics :

- Carbon steel or wear resistant carbon steel fastener
- **Packaging:** Box of 10 or 25 fasteners (depending the type)
- **Installation Method :** Belt drilling template, bolt tightening tool and bolt breaker



ADVANTAGES

- Easy and fast to install
- Without expensive installation tool

+ 6 points fasteners

6 points fasteners MLT allows to repair conveyor belts easily. They are ideal for belt passing.

6 points n°	1	2	3	4	5	6	7
Belt thickness, mm	4 - 6	6 - 8	8 - 10	10 - 13	13 - 16	16 - 19	19 - 22



ADVANTAGES

- Easy and fast to install
- Without expensive installation tools
- Perfect for belt passing

PACKAGING

Depending on your needs

6 points fasteners :

- Coated treated galvanised steel
- Fine and very sharp point fastener
- Available in boxes of 100 fasteners
- **Installation tool :** hammer

Distributor logo