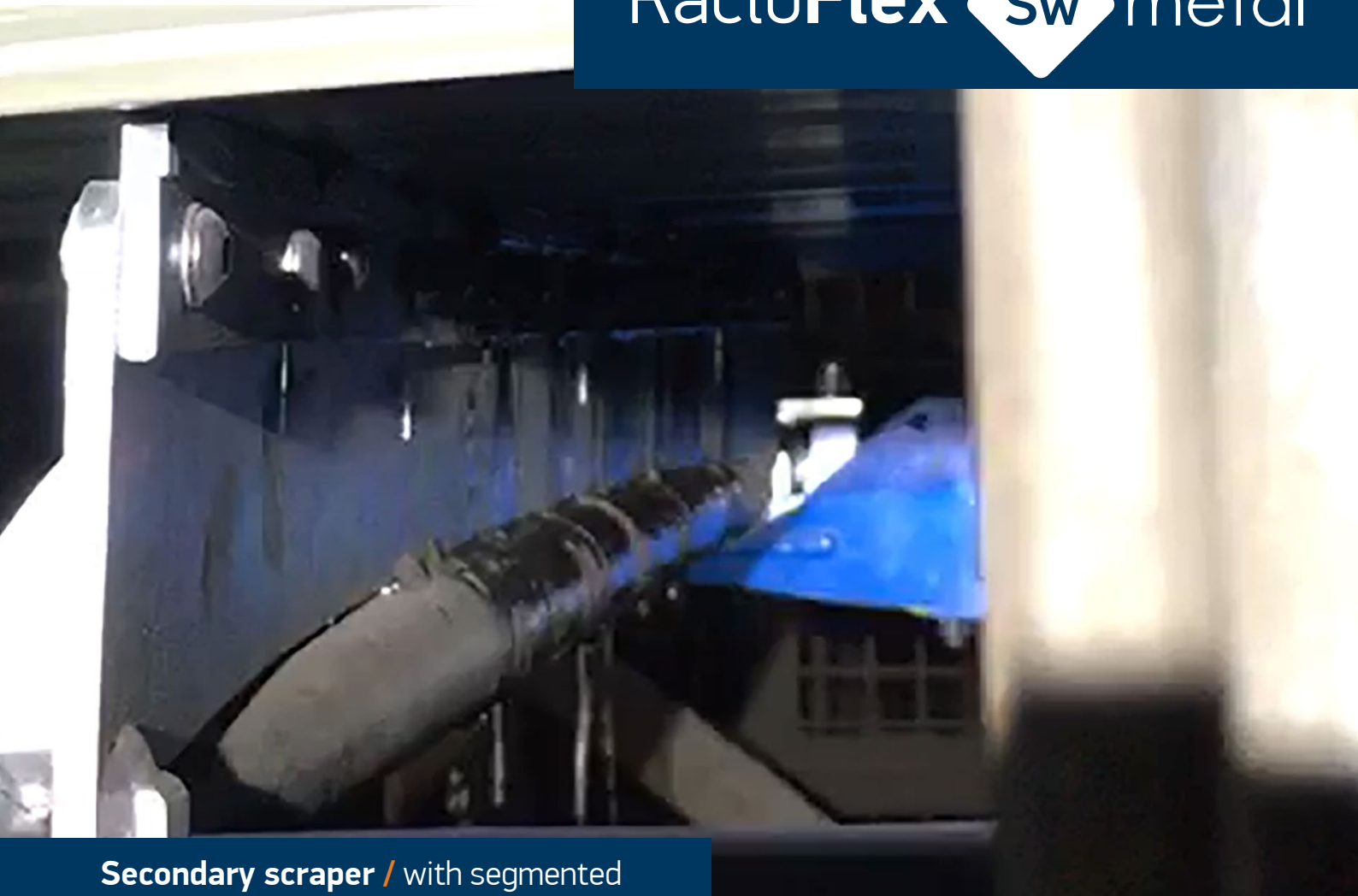


RacloFlex™  metal



Secondary scraper / with segmented
mono-blade for belt from 300 to 1200 mm



WHY CHOOSE THE RACLOFLEX™ SW metal ?

Maximum efficiency;
economical maintenance

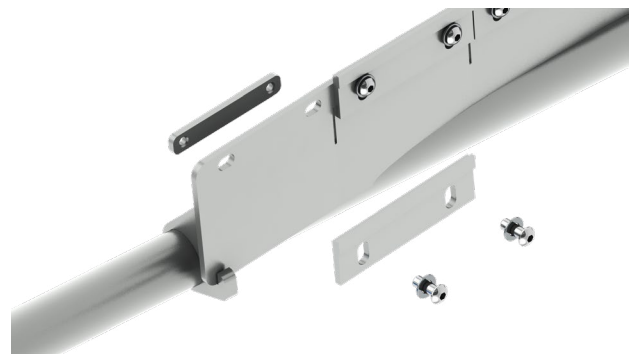
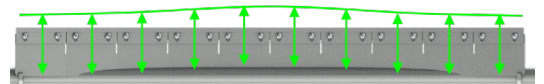
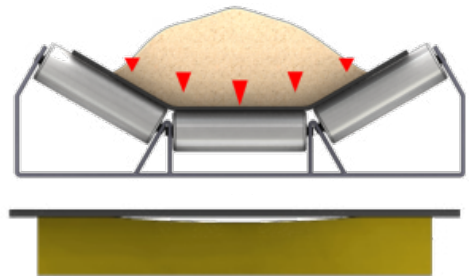
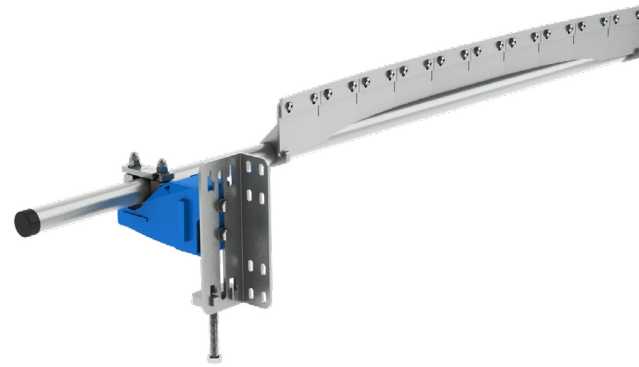
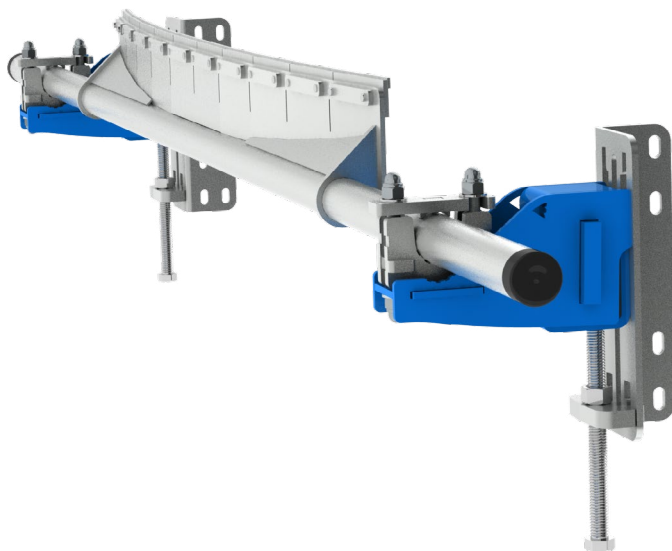
+ Independent replacement and adjustment of each blade

Due to the natural slope of the substance carried, the cleaning is intense in the center of the belt and causes a faster wear of the scraper.

A simple mono-blade scraper cannot correct this problem and its blade must be changed completely only for a small section of wear.

The setting possibilities of the **RacloFlex™ SW metal** allows :

- to adapt the shape of the blade on a concave or convex belt
- to readapt the blade in case of fast wear in the center
- to only change the necessary blades

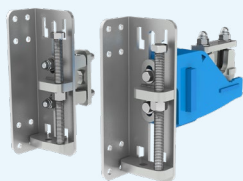


ADVANTAGES

- Easy installation
- Long lifetime
- Fast opening level
- Easy and very space saving
- Very high cleaning performance
- Galvanised steel parts
- Retractable pressure rods
- Solid mechanism for a reasonable weight
- Graduated shock absorbers, with cogs and non-return

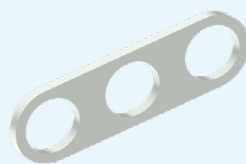


OPTIONS, ACCESSORIES AND VERSIONS



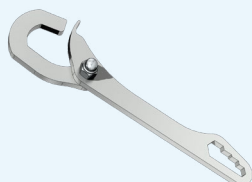
Pulling pressure

Allows the Scraper pressure to be adjusted from above and within the location angle.



Adjusting bracket

Enables you to cut and weld the support tube to reposition the blade with respect to the support mounts.



Special «MultiTool key»

Performs all the necessary functions for the manipulation and settings of the scraper.

General information for the RacloFlex™ SW metal

Blade Quality:	Tungsten Carbide : 93 HRA 3x15 mm
Working position:	Scraping angle = 90° (see notice) « spoon » blades and front shock absorbers
Surface treatment:	All parts electro-plated or painted + A2 stainless steel bolts
Room temperature:	-15° / + 70° C Continuous ambient air temperature: 80°C max
Product temperature:	-30° / + 120° C continuous / +250°C peak
pH Range:	4 to 10
Maximum speed:	metal = 3 m/s
Avoid exposure to:	Impact and fastener to Tungsten Carbide (choose Impact Carbide) Corrosive atmosphere : Stainless Steel is possible on all or part Uncontrolled fouling on entire scraper

Belt, mm	300	400	500	650	800	1001	1002	1200
Scraping width, mm	252	378	504	630	756	882	1008	1134

For any request of a scraper to suit greater than 1200 mm belt, the scraper will be manufactured to order.

The logo features the text "RacloFlex™" in a white sans-serif font, followed by a white diamond shape containing the letters "Sw" in a bold, black sans-serif font, and the word "metal" in a white sans-serif font. The background is a dark, industrial scene with a bright light source on the right.

RacloFlex™ Sw metal

MLT Conveyor Solutions Expert
More than 70 years of innovation
at your service

The logo consists of a stylized globe icon made of blue, green, and orange segments, followed by the text "MLT GROUP" in a bold, dark blue sans-serif font, and "Conveyor Solutions Expert" in a smaller, dark blue sans-serif font below it.

MLT GROUP
Conveyor Solutions Expert

www.mltgroup-conveyor.com - info@mltgroup-conveyor.com