

RacloFlex™ 



Belt scraper / Primary multi-blade belt scraper
with automatic spring tensioner

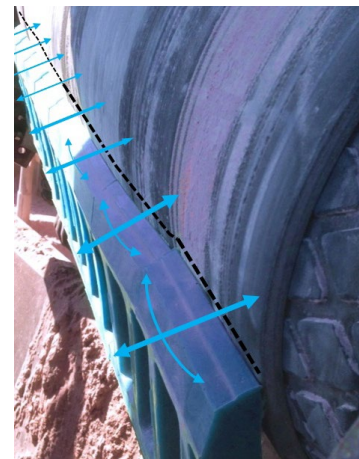
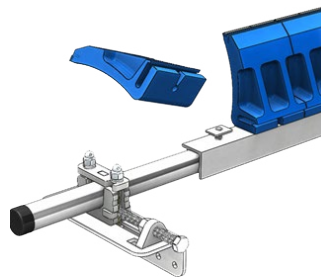
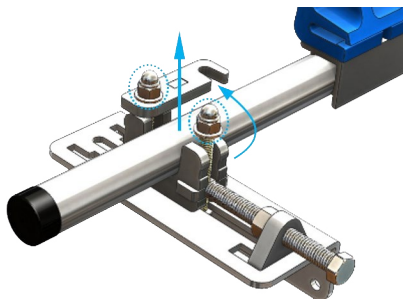
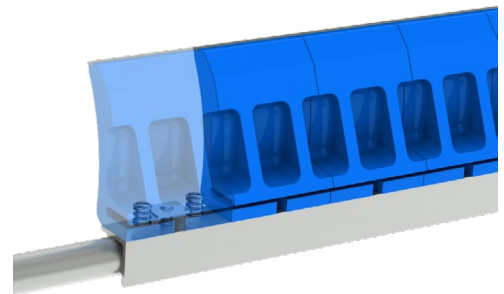
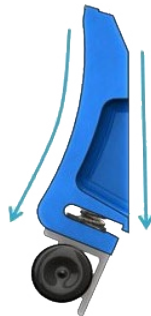
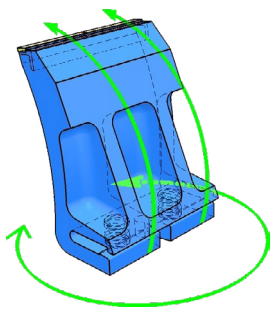
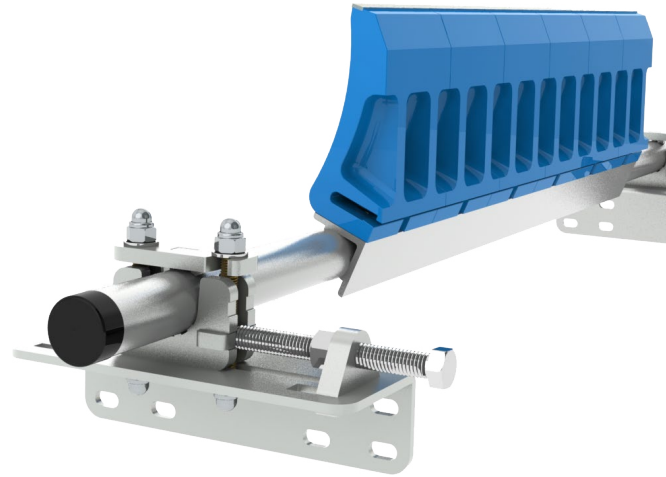


WHY CHOOSE THE RACLOFLEX™ Z²?

A unique technological innovation on the market

+ An ingenious system that adapts to your belt

Each anti-clogging profile blade is equipped with internal 2 springs and is quick connected on a pivot that allows slight rotation and easy change without adjustment.



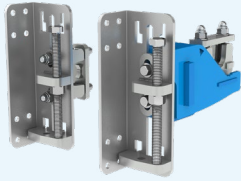
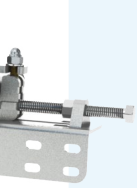
The Competitors' simple mono-blades cannot adapt to the belt

The multi-blades of the RacloFlex™ Z² follow the profile of the belt and adapt perfectly

ADVANTAGES

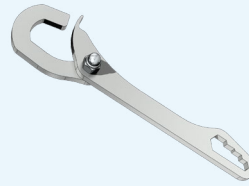
- Economic and adaptable
- High performance cleaning
- Galvanised metallic parts
- Notched bearing with fast opening system
- Only worn blades require replacement
- Various blades available
- Retractable pressure rod
- Adjustable on concave or convex belt
- Pressure via the integrated spring in each blade
- Automatic realignment of blades to ensure central wearing

OPTIONS, ACCESSORIES AND VERSIONS



Pulling pressure

Allows the Scraper pressure to be adjusted from above and within the location angle.



Special «MultiTool key»

Performs all the necessary functions for the manipulation and settings of the scraper.

Special Qualities



A variety of blade qualities available for any type of application.

General information for the RacloFlex™ Z²

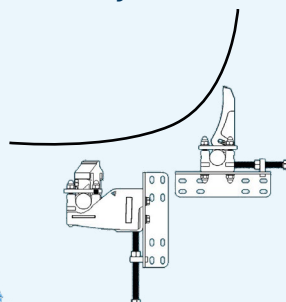
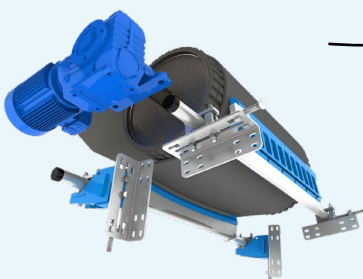
Blade quality:	Tungsten carbide : 93 HRA 3x10mm	
	Or- Tungsten carbide : 93 HRA 5x10mm	
	Or- Wear resistant polyurethane : 25mm ³	
Working position:	Scraping angle = 90° at tangent (see notice)	
Surface treatment:	All zinc-plated steel pieces + A2 grade Stainless bolts	
Temperature:	-15° / + 50° C	
pH range:	3 to 11	
Maximum speed:	Z ²	1 way = 2 m/s 2 ways = not recommended
	Z ² -HD	1 way = 4 m/s 2 ways = not recommended
Avoid exposure to:	Impact and staples on Tungsten carbide (Choose Polyurethane blades or Impact carbide)	
	Hot steam : special quality available	
	Corrosive atmosphere : All or part stainless steel possible	
	Paper, thread, fabrics and household waste	
	Uncontrolled fouling on entire scraper	

*Registered trademark, all rights reserved

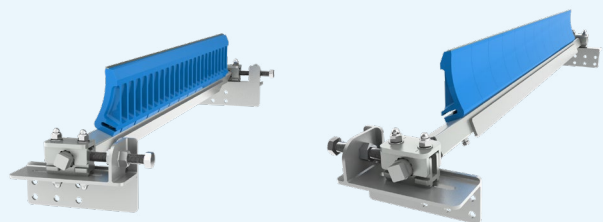
Belt, mm	400	500	650	800	1000	1200	1400	1600	1800	2000
Scraping width, mm	378	504	630	756	882	1134	1260	1512	1638	1890
Number of blades	3	4	5	6	7	9	10	12	13	15

For any request of a scraper to suit greater than 2200 mm belt, the scraper will be manufactured to order.

Typical application in conjunction with a RacloFlex™ Sw



RacloFlex™ Z²-HD



The heavy version of the RacloFlex™ Z²- HD is suggested for 1400 to 2200 belts ; Tungsten carbide 5x10, tube, reinforced mechanism



RacloFlex™ Z²

MLT Minet Lacing Technology
More than 70 years of innovation
at your service



MLT GROUP
Conveyor Solutions Expert

www.mltgroup-conveyor.com - info@mltgroup-conveyor.com