

TECHNICAL DATA SHEET

SELF-LOCK™ FASTENER

PATENTED PRODUCT
MADE IN FRANCE

TECHNICAL DATA

FASTENER

Fastener size	Belt thickness		Minimum pulley diameter		Maximum operating tension of the belt	
	mm	inch	mm	inch	N/mm	PIW
SL™ 00	0.7 - 1.8	1/32" - 5/64"	25	1"	12	70
SL™ 01	1.8 - 2.4	1/16" - 3/32"	40	1"½	16	95
SL™ 02	2.4 - 3.5	3/32" - 9/64"	50	2"	28	160
SL™ 03	3.5 - 4.8	1/8" - 3/16"	60	2"¼	38	220



Self-Lock™ 00
(stainless steel)

Self-Lock™ 01

Self-Lock™ 02

Self-Lock™ 03



PACKAGING

According to your needs

PER BOX OF 4 JUNCTIONS*

the kit contains :

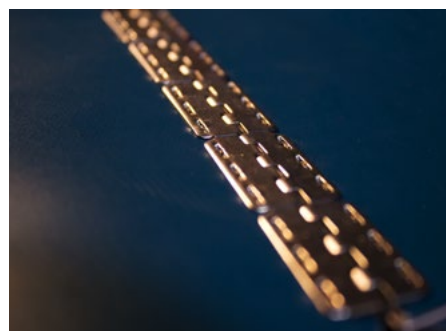
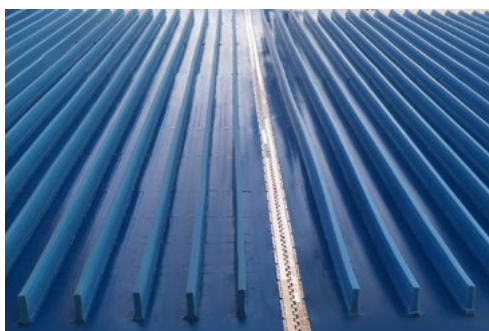
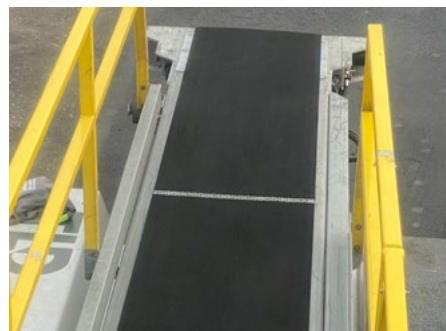
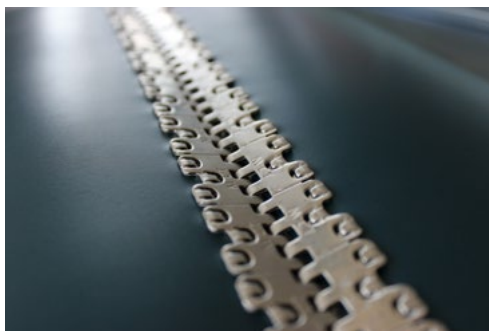
- 4 fasteners cut at the length adapted to the width of your belt, (600, 900, 1000, 1050, 1200, 2000, 3000 mm).
- rigid steel or stainless steel pin, adapted to the length, size and model of the clip.

PER CASE OF 48 JUNCTIONS*

the kit contains :

- 48 fasteners cut at the length adapted to the width of your belt, (600, 900, 1000, 1050, 1200, 2000, 3000 mm).
- Pins to be ordered separately.

*available for certain models of Self-Lock™ Fasteners : consult us



For any support in the installation of our products or in the resolution of problems on your conveyor belt, benefit from our **HOTLINE service** in real time.

Registration on www.mltgroup-conveyor.com/mlt-service

Distributor logo

PATENTED PRODUCT
MADE IN FRANCE



MLT GROUP
Conveyor Solutions Expert

www.mltgroup-conveyor.com - info@mltgroup-conveyor.com