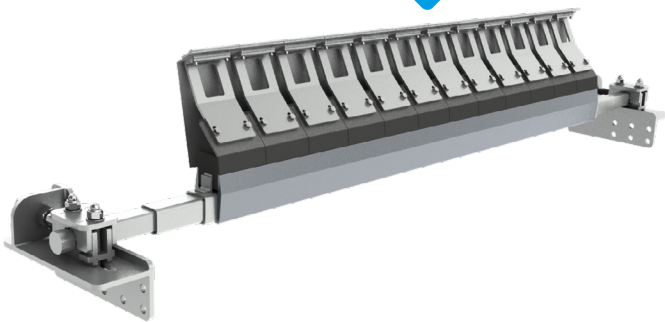


RacloFlex NT



RacloFlex NT HD



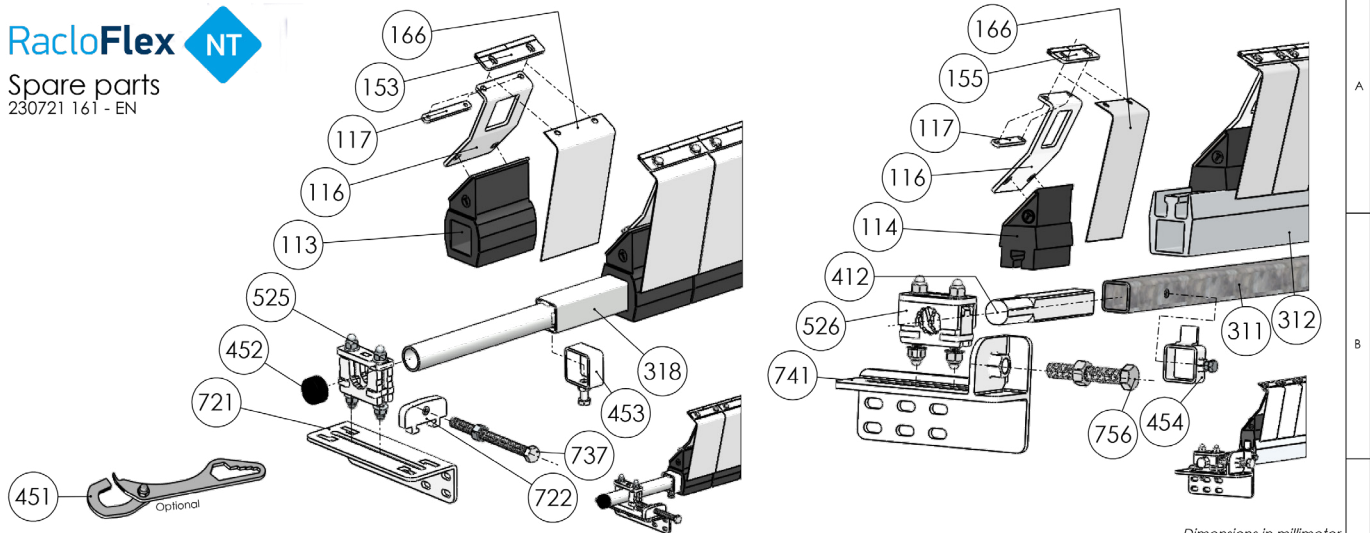
10/2023

TECHNICAL DATA SHEET

Position	Primary cleaner
1 or 2 ways working	2 ways
Maximum speed	<ul style="list-style-type: none"> • NT: 2m/s • NT HD: 4m/s
Blade type	Multi-blade independent scraper modules
Tension	Dual shore rubber block
Wear compensation	Manual blade adjustment
Pressure	Pushing screw
Blade fixing	Bolted
Mechanical splicing	Not recommended (tungsten carbide)
Tungsten carbide quality	Abrasion resistant = 93 HRA Impact resistant = 66 HRA
Structure quality	Steel ST37 Zinc plated (optional stainless steel)
Shaft size	<ul style="list-style-type: none"> • NT: Ø42,4 th.4 • NT HD: 50x50 plain
Bolts quality	Stainless steel
Ambient temperature range	-10°C / +50°C
Product temperature range	0°C / +70°C (+120°C alternative)
Don't use on oil, solvent or hydrocarbon (on standard)	

RacloFlex NT

Spare parts
230721 161 - EN



Dimensions in millimeter

N°	Designation	Laterality	Quality	Variant(s)	Belt	Bloc Qty 111/112	Tube 311 Length	Profile 312 Length	Axe 412 Length	Bracket Size	Blocs & Tube	Left	Right
113	Bloc Type T		Rubber	123: Synthetic Rubber									
114	Bloc Type T-Profile		Rubber	124: Synthetic Rubber									
116	Arm NT		Galva. ST	126: Stainless Steel	400	3	500	0	300	721+525	113+311		
117	Double Nut NT		Galva. ST	127: Stainless Steel	500	4	650	0	300	721+525	113+311		
153	Blade T - Tungsten 3mm		Galva. ST	154: Ing.Impact / 161: SST only	650	5	800	0	400	721+525	113+311		
			Galva. ST	160: Alumina / 163: Ing3+SST	800	6	1000	0	400	721+525	113+311		
			Galva. ST	154: Ing.Impact / 161: SST only	1001	7	1200	0	600	721+525	113+311		
			Galva. ST	160: Alumina / 165: Ing5+SST	1002	8	1200	0	600	721+525	113+311		
155	Blade T - Tungsten 5mm		Galva. ST	154: Ing.Impact / 161: SST only	1200	9	1400	0	600	721+525	113+311		
			Galva. ST	160: Alumina / 165: Ing5+SST	1402	11	1600	0	600	721+525	113+311		
166	Deflector NT		SST	156: PEHD	1401	10	1600	0	600	721+525	113+311		
311	Tube Support 50x50		Galva. ST	331: SST	1402	11	1600	0	600	721+525	113+311		
312	Profile		Aluminum		1401 HD	10	1600	1260	600	721+525	114+312+311		
318	Structure N-NT 42		Galva. ST	338: SST	1402 HD	11	1600	1386	600	721+525	114+312+311		
412	Axe 40x40		Galva. ST	432: SST	1600 HD	12	1800	1512	600	741+526	114+312+311		
451	Multitool wrench (optional)				1801 HD	13	2000	1638	1000	741+526	114+312+311		
452	Cap		PVC		1802 HD	14	2000	1764	1000	741+526	114+312+311		
453	Locking ring		Galva. ST	473: SST	2001 HD	15	2200	1890	1000	741+526	114+312+311		
454	Locking ring with hold		Galva. ST	474: SST	2002 HD	16	2200	2016	1000	741+526	114+312+311		
455	Shift ring (optional)		Galva. ST	475: SST									
525	Bearing QL - Medium		Galva. ST	535: SST									
526	Bearing QL - Large		Galva. ST	536: SST									
721	Angle Medium only		Galva. ST	731: SST									
722	Angle Bridge Medium		Galva. ST	732: SST									
737	Pressure Bolt Medium M16x190		SST										
741	Angle Large	L or R	Galva. ST	751: SST									
756	Pressure Bolt Large M24x140		SST										

INSTRUCTIONS

Attention – Warning - Warnung



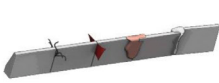
Incompatible avec huile
Not compatible with oil
Nicht kompatibel mit Öl



Incompatible sur tambour relief
Not compatible on asperity drum
Nicht kompatibel mit Rauheit Trommel

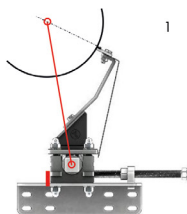


Pas d'impact sur les lames
No impact on blades
Kein Schlag auf die Klingen

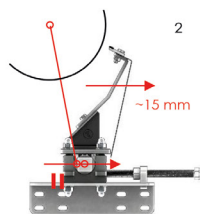


Incompatible avec fil, tissu ou feuille
Not compatible with wire, cloth or sheet
Nicht kompatibel mit Draht, Stoff oder Blatt

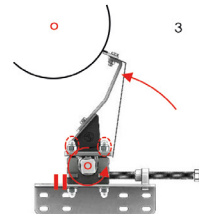
Réglage étape par étape / Adjustment step-by-step / Einstellung Schritt für Schritt



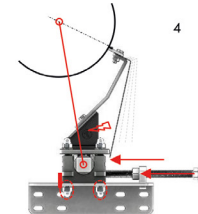
Fixer corièr, ajuster EA + faire une marque
Attach bracket, adjust EA + make a mark
Winkel befestigen + EA einstellen + markieren



Reculer palier et lame
Back-off bearing and blade
Schaber und Achshalter rückwärts fahren



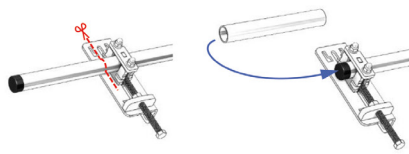
Tourner lame sur le tambour, puis bloquer axe
Turn blade against drum and lock the shaft
Schaber gegen Trommel drehen und Achsen verriegeln



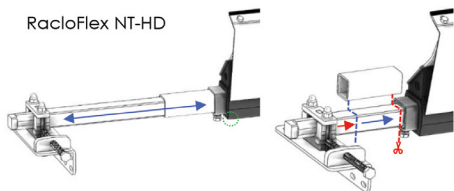
Pousser palier jusqu'à EA correct, vérifier pression.
Bloquer tout
Push up to good EA, check pressure. Lock all
Schieben bis korrekten EA, Druck überprüfen, alles verriegeln

Axes et réglage de la largeur / Axles and width adjustment / Achsen und Breitereinstellung

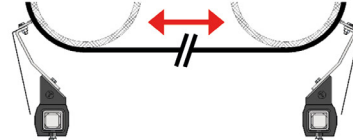
RacloFlex NT



RacloFlex NT-HD



Bande reversible / 2 Ways belts / Reversierbänder

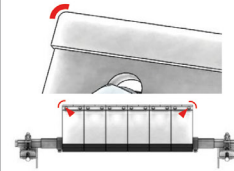


Remplacement / Replacing / Ersatz

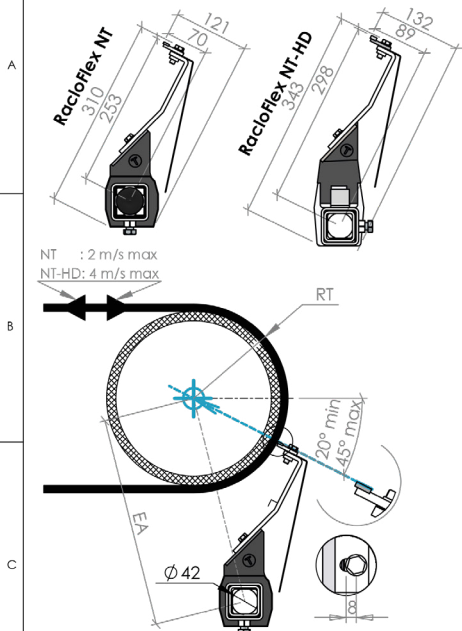
Régler suivant usure ou forme / Adjustment according to wear or shape / Folgender Verschleiß oder Einstellung Form



Arrondir les coins extérieurs / Round the outside corners / Runde die äußere Ecke



Dimensions



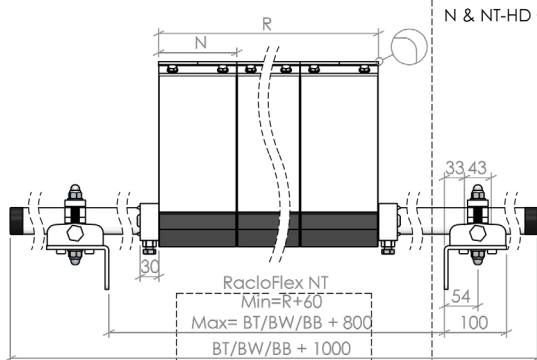
NT: $EA = \sqrt{65515 + (RT+70)^2}$

RT	100	125	150	175	200	225	250	275	300	325
EA	308	322	338	355	373	391	410	430	450	471
EA	492	514	536	558	580	603	625	648	671	694
RT	350	375	400	425	450	475	500	525	550	575

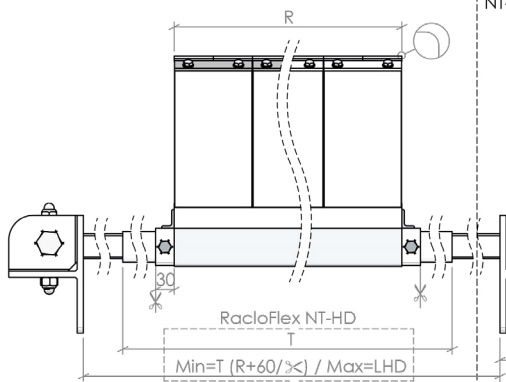
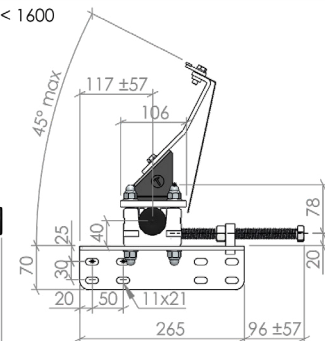
NT-HD: $EA = \sqrt{87615 + (RT+89)^2}$

RT	100	125	150	175	200	225	250	275	300	325
EA	352	366	381	397	414	432	451	470	489	509
EA	530	551	572	594	615	637	660	682	705	727

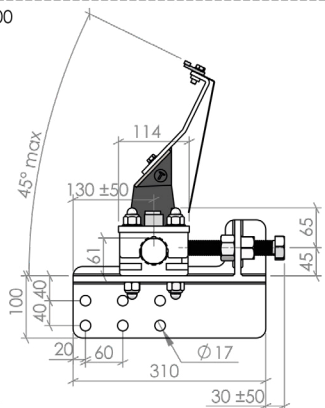
BT/BW/BB	400	500	650	800	1001	1002	1200	1401	1402	1600	1801	1802	2001	2002
N=126	3	4	5	6	7	8	9	10	11	12	13	14	15	16
R	378	504	630	756	882	1008	1134	1260	1386	1512	1638	1764	1890	2016
LHD	2145	2145	2370	2970	2970	2970	3170	3170	3170	1600	1600	1800	2000	2200



N & NT-HD < 1600



NT-HD ≥ 1600



T°C min/max	-10	+50
pH min/max	4	10

RacloFlex NT RacloFlex NT HD

MLT GROUP
Conveyor Solutions Expert

Format A4
Échelle 1:8

Plan N° 180627 141