

HAUL-OFF BELTS



PATENTED PRODUCT


MADE IN FRANCE

Manufactured to order / Technical belts



TECHNICAL BELTS HAUL-OFF BELTS



CABLE DRAWING BELTS ARE USED IN 2 TYPES OF MACHINES:

- CATERPILLAR MACHINES
- CAPSTAN MACHINES



CATERPILLAR MACHINES



Standard caterpillar



Caterpillar machines with high tension



Drum twister



CAPSTAN MACHINES



Capstans require stronger haul-off belts than the caterpillar machine.



Cable drawing belts installed on a capstan which manufactures submarine and high voltage cables.



All our technical belts are manufactured spliceless, and made to order, according to your specific measurements and needs.

We reserve the right to change the specifications of our products at any time without notice

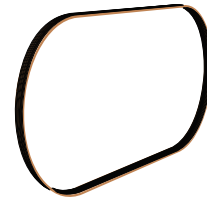
OUR WORK HAUL-OFF BELTS



THE CARCASSES



Standard: 1 single fabric wound on several turns with overlap



Kevlar cord :
wound on several turns



PROFILES ACCORDING TO YOUR MEASUREMENT

TOP SIDE



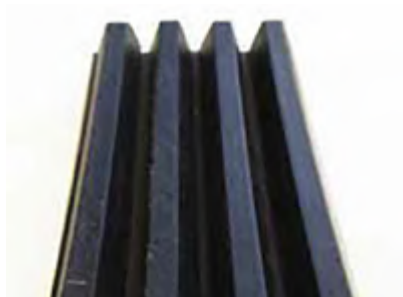
V-grooves or half-round grooves



WINDING FACE



Poly V M



Other grooves on request



Poly V L



MOLDED EDGES



TECHNICAL DATA HAUL-OFF BELTS

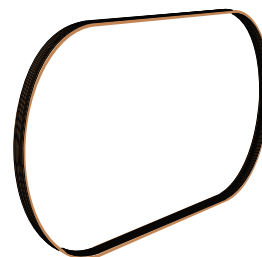
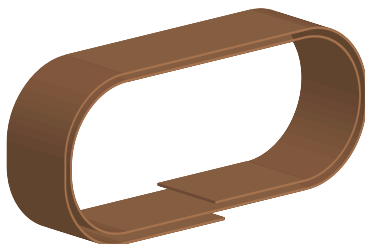
Breaking tension	Up to 2 500 N/mm
Carcass	<ul style="list-style-type: none"> • Textile up to 5 plies • Wound cord (rayon or aramid) • Heat vulcanizing of poly-V belts, notched belts...
Cover	Rubber up to 80 ShA : <ul style="list-style-type: none"> • Abrasion Resistant (excellent index of 50 mm³) • Oil and grease resistant - especially for copper (115 mm³ index) • Retardant up to 200°C (index 115 mm³) • White - non staining (index 110 mm³)
Width	Up to 300 mm
Advantages	<ul style="list-style-type: none"> • No splice, therefore no risk of belt opening • Homogeneous belts, no extra thickness • Run on small pulley diameters • Straight traction at different speeds • Grooves on request: grinding, 1/2 round, V, poly-V grooves,...



Haul-off belts in a cable factory



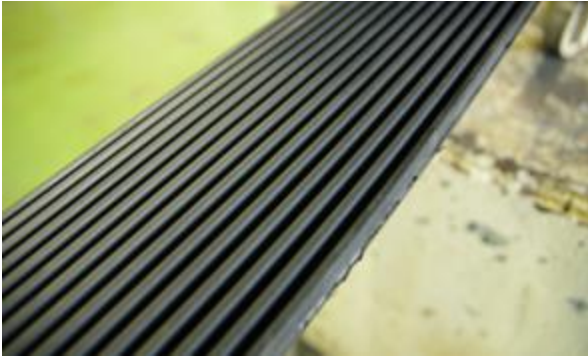
2 POSSIBLE CONSTRUCTIONS



breaking tension	
Up to 1500 N/mm	Up to 2 500 N/mm
Carcass	
Polyester-polyamide fabric wound endlessly spliceless	Carcass construction to work under constraints & pressure, endless cord rolled spliceless Rayon - Aramid
Advantages	
<ul style="list-style-type: none"> • Vulcanization spliceless and under tension • Homogenous finish 	<ul style="list-style-type: none"> • Vulcanization spliceless and under tension • Homogenous finish • Highly resistant to breakage • Recommended for capstans or tracks subject to high tensions.

TECHNICAL DATA

HEAT VULCANIZING OF RUBBER



- + POSSIBILITY OF MAKING CUSTOM PROFILES BY MOULDING
- + PERFECT FOR STRANDING CATERPILLAR
- + SIGNIFICANTLY HIGHER RESISTANCE THAN COLD BONDING

Carcass	<ul style="list-style-type: none">• Poly-V• Synchronous belts• Trapezoidal belts
Covers	<ul style="list-style-type: none">• Abrasion resistant• Oil & grease resistant• Heat resistant• Fire resistant & antistatic (ISO 340 & 284)
Perfect for	<ul style="list-style-type: none">• Cable drawing belts• Specific belts (for example : agriculture, to pull vinyard cep...).



All our technical belts are manufactured spliceless, and made to order, according to your specific measurements and needs.

We reserve the right to change the specifications of our products at any time without notice

TECHNICAL INQUIRY

HAUL-OFF BELTS

MACHINE TYPE INFORMATION

Standard caterpillar

Stranding caterpillar

Capstan

Model :

Brand :

Pulleys diameters :

Are the pulleys equipped with flanges? : Yes, what is the range between the 2 flanges?
No

Tension applied during production :

Pressure applied during production :

Rotation speed of the belt : m/s

BELT DIMENSIONS

Max endless length* : mm

Min endless length* : mm

Width : mm

Thickness : mm

* We always measure the belts inner circumference. In order to measure the maximum length, we spread the 2 rolls to the maximum. For the minimum length, bring them as close together as possible.

TENSION

Breaking tension : N/mm (mentioned on the technical data sheets of the supplier of the machine or the previous belts)

Belt rotation speed :

EXTRUDED PRODUCT DATA

Type of product (cable, hose, flat...):

Diameter for cables & other round profiles : mm

Width & thickness for flat profiles : mm

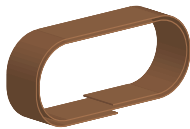
Material :

Oil / grease : Yes No

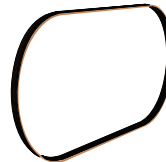
Temperature : °C

CARCASS

Fabric



Cord (Kevlar)



COVERS

Top side

Hardness : ShA

Material :

Colour :

Profiles (smooth, 1/2 round, V...):

Profiles (width, thickness, radius) :

Bottom side

Hardness : ShA

Material :

Colour :

Profiles (smooth, 1/2 round, V...):

Profiles (width, thickness, radius) :

Supplier name of the existing belt :

OBSERVATIONS CONCERNING THE EXISTING BELT :

Do you have photos, sketches, a plan of the belt to send us with this inquiry?

Please fill in as much information as possible so that we can define and adapt the structure of the belt (we design and manufacture belts adapted to each machine and product in contact.

NOTES

A series of horizontal dotted lines for writing notes.



HAUL-OFF BELTS

PATENTED PRODUCT
MADE IN FRANCE

MLT Minet Lacing Technology

More than 70 years of innovation
at your service



www.mltgroup-conveyor.com - info@mltgroup-conveyor.com