



## INSTALLATION METHOD

### *MLT Quick Driver*



			ge
			e (en mm)
			pp*
			PIW
			200
	315/2	315/3	
40	400/2	400/3	

# MINIMAL VIBRATION, MAXIMUM PRODUCTIVITY

## ADVANTAGES

- Optimal and incomparable comfort when using
- Compact and light weight
- Versatility
- Compatible with other installation tools on the market

### Unparalleled comfort thanks to its vibration damping, oscillatory system and ergonomic handle

The hammer of the **MLT Quick Driver** is designed to minimize any vibration, while maintaining high performance of the tool. It is unique in that it incorporates revolutionary ergonomic benefits. Its weight is less than 1.3 kg.

The pistol grip is equipped with an anti-vibration system and a rubber coating. Its position is adjustable according to the positioning of the body in relation to the work area: The user then has a comfortable use, without extra force.

### Adjustable power

The **MLT Quick Driver** is adjustable, allowing the user to precisely match the required power to the selected belt and fastener.

### Versatility

The MLT teams have developed punches that allow you to use two types of fasteners for light duty belts:

- The Self-Lock®
- The Mini Record (MR)

but also other fasteners: the MLT Quick Driver can be combined with many of the tools on the market.



# REQUIRED MATERIALS

to install Mini Record or Self-Lock® easily

These are the tools needed to install the **Mini Record** or **Self Lock®**, quickly and easily.



Appropriate Mini Record or Self Lock®



Square bracket



Pen



Tape measure

*\*All of these tools are available in MLT's tool catalogue.*

## PPE recommended by MLT



Light protection goggles



Safety shoes



Cut resistant gloves



A safety helmet



### Technical characteristics

Weight equipped	2 kg
Fasteners	MR / Self-Lock®
Energy	Pneumatics
Joules	max. 6 joules



### Pressure adjustment depending on the fastener\*

	MR 1	MR 2	MR 2
Pressure steel (Bar)	2.5 - 3.0	3.0	3.0 - 3.5
Pressure stainless steel (Bar)	3.0 - 3.5	3.0 - 3.5	3.5

	SL 00	SL 01	SL 02	SL 03
Pressure steel (Bar)	-	3.0	4.0	5.0
Pressure stainless steel (Bar)	2.5	4.0	5.0	5.5

\* given as an indication: may vary depending on the type of belt

# Using instructions

## WARNING

TO REDUCE THE RISK OF INJURY, THE USE, INSTALLATION, MAINTENANCE, CHANGES TO ACCESSORIES OR ANY WORK NEAR THIS TOOL SHOULD BE PERFORMED BY A PERSON WHO HAS READ AND UNDERSTOOD THE INSTRUCTIONS BEFORE PERFORMING THE TASK.

### Recommendation:

The hammer must not be connected to compressed air!

It is recommended to supply the **MLT Quick Driver** with compressed air only during the installation phases

## MLT Quick Driver assembly mode



1| Take out the hammer from the case.



2| Insert the chosen punch (**Self-Lock®** or **Mini Record**) into the nose of the hammer.



3| Push the spring outwards with your thumbs until it fits into the punch groove.

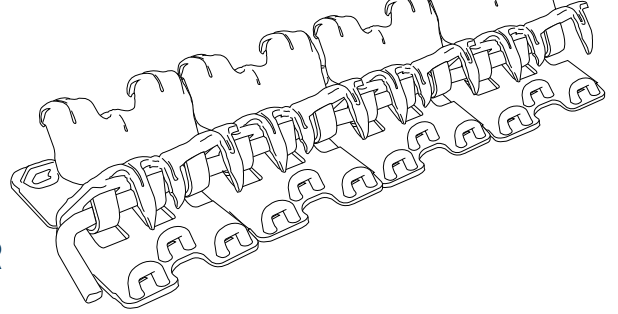


4| Insert the corresponding head (**Self-Lock®** or **Mini Record**) on the previously locked punch.

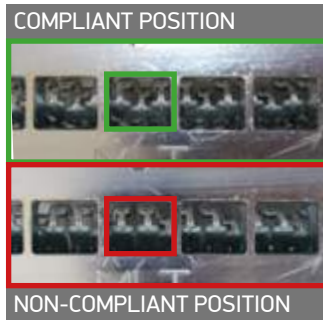


5| Turn the head for more comfortable use and tighten the clamping ring with an Allen key.

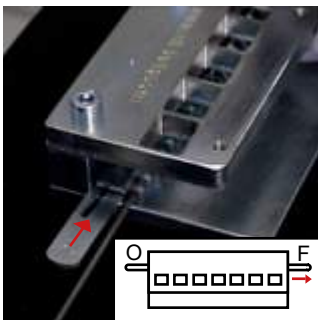
# HOW TO INSTALL THE SELF-LOCK® FASTENER WITH THE MLT QUICK DRIVER



1| Check the thickness of the belt to choose the correct fastener. Cut the belt square.



2| Place the **Self-Lock®** fastener in the installation tool so that each strip is under an opening in the device. The part with the hooks must be above.



3| Insert gauge pin according to belt thickness. Tighten fastener and gauge pin with the locking cam (push side «F» for closing).



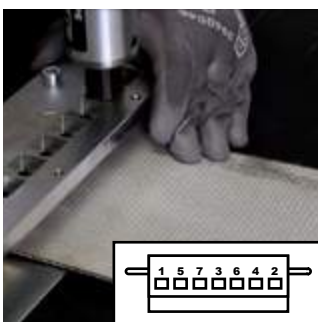
4| Place the bottom side of belt against the comb. Hold it by hand or with the locking screws.



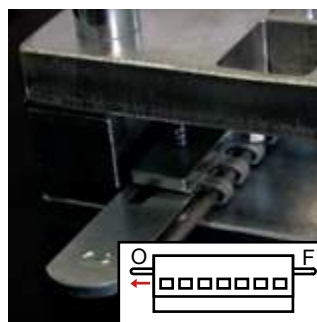
5| Connect the **MLT Quick Driver** to your compressed air device (you will first need to assemble the special **Self-Lock®** punch and the head on the **MLT Quick Driver**). On the FRL (Filtration, Regulation, Lubrication), set the pressure corresponding to the fastener to install (refer to the pressure compared table on page 3).



6| Position the hammer vertically, using the guide.



7| Press the trigger to activate the **MLT Quick Driver** (a few hits are enough), its punch will then hit and close the fastener. First close the strips on the edge (#1 and #2) using the **MLT Quick Driver**, checking the belt is still located against the fasteners guide. Then close a center strip (#3), and complete the installation by alternating the sides.



8| Unlock the cam (push «O» side) and take out the installed fastener. Take the other side of the belt and align it with the already fastened side. Mark the position of the second strip. Repeat from step 2



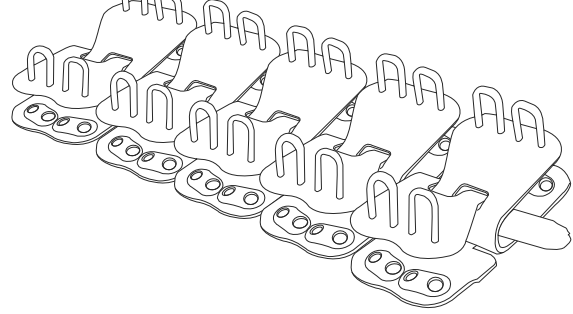
9| Disconnect the **MLT Quick Driver** after use.



10| Cut the corners of the belt. Insert the connecting pin into the fasteners.



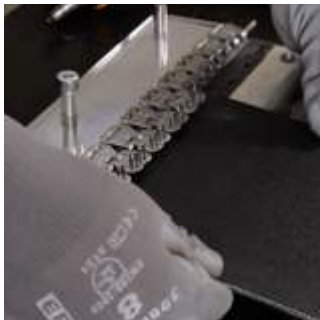
# INSTALL MINI RECORD FASTENER WITH MLT QUICK DRIVER



1| Choose the fastener corresponding to the belt thickness. Cut the belt square



2| Choose the comb according to the **Mini Record** fastener type and set it on the installation tool. Place the fastener (staples on top) in the installation tool. Insert the connecting pin.



3| Place the belt inside the first half of the **Mini Record** fastener and hold it assuring it does not slide.



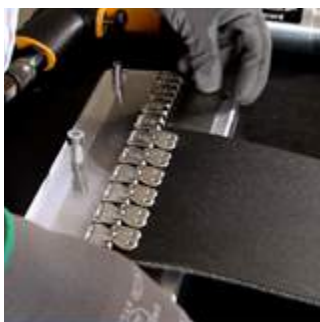
4| Connect the **MLT Quick Driver** to your compressed air device (you will first need to assemble the punch guide and the **Mini Record** special punch on the hammer). On the FRL (Filtration, Regulation, Lubrication), set the corresponding pressure on the fastener to install (refer to the pressure compared table on page 3).



5| Position the hammer vertically, using the guide.



6| Position the head over the two staples vertically and press down to close the fastener. Press the trigger to activate the hammer (some hitting is enough). Begin by the left and right ends, then the center. The staples will resume closing themselves when hitting the matrix of the anvil.



7| Slide the steel plate under the **Mini Record** fastener and hammer the staple with the steel head hammer to close the **Mini Record**. Repeat the operation on all the fasteners. Remove the spindle



8| Take opposite belt side. Align it with the side already installed **Mini Record** fastener. Mark the fastener position and alignment and install as instructed from step 2. Repeat from step 2.



9| Disconnect the **MLT Quick Driver** after use.



10| Cut the corners of the belt. Insert the connecting pin into the fastener. If necessary block it with washers on both extremities.

# HOTLINE MLT service

## Our MLT representatives will assist you remotely and in pictures

The **HOTLINE MLT** service is at your disposal to assist you live in the resolution of any problems you may encounter :

belt rupture, a rip or any other problem on your conveyor belt, we can help you free of charge, remotely and in pictures.

Our teams are available to answer your questions in 10 languages!

Register online so that one of our representatives can contact you and help you as soon as possible:

[www.mlt-lacing.com/mlt-hotline](http://www.mlt-lacing.com/mlt-hotline)



hotline pre-registration  
[www.mlt-lacing.com/mlt-hotline](http://www.mlt-lacing.com/mlt-hotline)





# ***MLT Quick Driver***

## **MLT Minet Lacing Technology**

More than 70 years of innovation  
at your service



**Distributor logo**



[www.mltgroup-conveyor.com](http://www.mltgroup-conveyor.com) - [info@mltgroup-conveyor.com](mailto:info@mltgroup-conveyor.com)