



| | | | |
|----|-------|-------|-----------|
| | | | ge |
| | | | e (en mm) |
| | | | pp* |
| | | | PIW |
| | | | 200 |
| | 315/2 | 315/3 | |
| 40 | 400/2 | 400/3 | |

REQUIRED MATERIALS

to install SUPER-SCREW® easily

These are the tools needed to install the **Mini Record** fastener quickly and easily.



Appropriate
Mini Record

Innovation
MLT



Ruler



Set square



Pen



Tape measure



Installation tool



Hammer

**All of these tools are available in MLT's tool catalogue.*

PPE recommended by MLT



Light protection
goggles



Safety shoes



Cut resistant gloves



A safety
helmet



Manual installation tool

Characteristics:

- An installation tool equipped with an awl and a mallet (Available in 300, 600, 1000 and 1200 mm)

Advantages:

- Really easy to use
- No power source required



MLT QUICK DRIVER

Characteristics:

A complete kit equipped with: a Chisel hammer, 2 heads and a punch (Note: the **Self-Lock®** and **Mini Record** fasteners installation tool should be ordered separately)

- Reduced weight : about 2 kg equipped
- Power : pneumatic
- Ergonomic
- Adjustable power

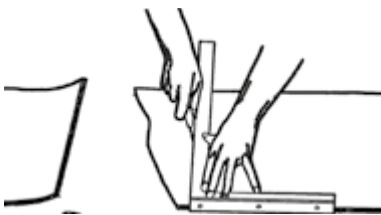
Advantages:

- Extremely low vibration
- Versatile : enables **Self-Lock®**, but also **Mini Record (MR)** installation
- Optimal comfort use (left and right handed)
- Compact and light
- Compatible with other installation tool on the market.

Installation method

How to install your Mini Record ?

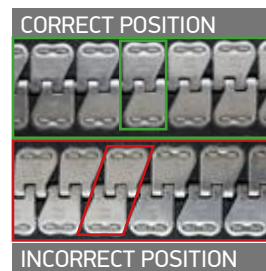
| | MR1 | MR2 | MR3 |
|------------------------|-----------|-------|-----------|
| Belt thickness, mm | 1.5 - 3.2 | 3 - 5 | 4.8 - 6.4 |
| Max belt tension, N/mm | 20 | 32 | 40 |
| Min pulley Ø, mm | 50 | 75 | 100 |



1| Select the clip corresponding to the belt thickness. Cut the belt at right angles.



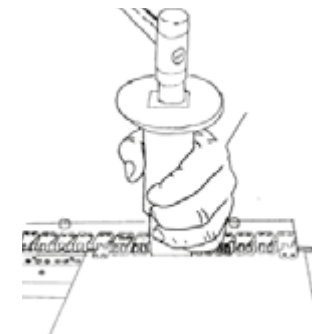
2| Choose the comb according to the fastener and install it on the installation device.



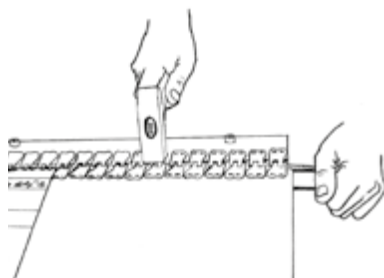
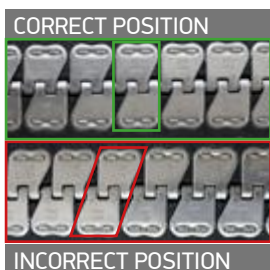
Place the fasteners (staples on top) in the installation device. Be careful with the position of the fastener on the comb (see photo). Insert the connecting pin provided with the fastener.



3| Place the belt in the fastener and hold it so that it does not slip.



4| Close the fastener by covering the impression of the fastener on the staple and then strike with the mallet. Start with the left and right ends and then the center. Close the body of the fastener by hitting them lightly, so as not to damage the staples or the belt. Thanks to the matrix located on the base of the device, the staples will fold over.



5| Insert the metal plate under the **Mini Record** fastener. Gradually hit the studs with the metal hammer to give them time to close properly. Remove the connecting pin.

Do not tap on the hinge of the fastener

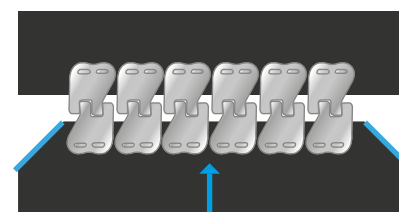
Take the other end of the belt and align it with the side of the fastener that is already in place. Mark the position of the fastener (be careful to correctly match the 2 sides of the fastener - see pictures opposite). Repeat from step 2.



6| Cut the corners of the belt on the trailing edge without touching the fastener.

Heat the ends of the pin to facilitate insertion into the fastener. Insert the connecting pin into the fastener.

When necessary, secure it with the retaining washers on each end.



Belt's traveling direction



Mini Record Fastener

MLT Minet Lacing Technology

More than 70 years of innovation
at your service

