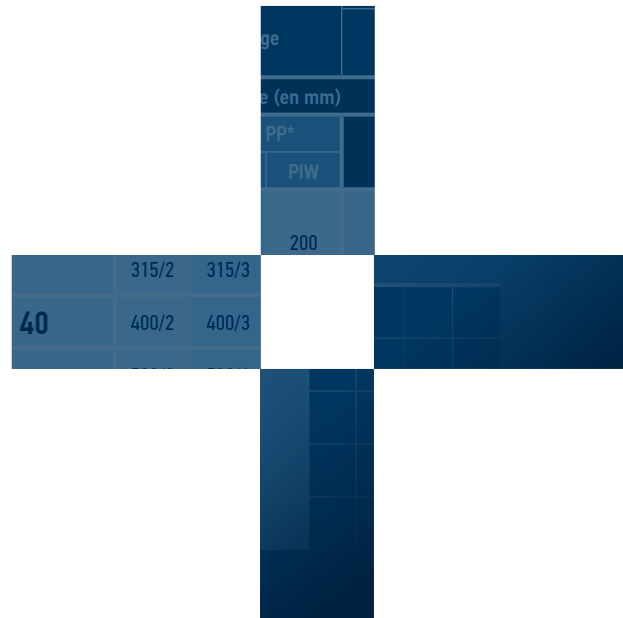




TECHNICAL DATA

FIX'N GO[®] PATCH

EW [®]	Bande EP ou PP*		Entretoise	Dimensions des vis														
	N/mm	PIW		3,5	4,5	4,5	4,5	2,5	4,5	3,5	6,5	2,5	6,5	3,5				
250/2	253/3	200	Taille unique Entretoise SUPER-SCREW [®] EVOLUTION															
315/2	315/3																	
400/2	400/3																	
500/3	500/4																	
630/2	630/3	360																
630/4	630/5																	
500/3	500/4																	

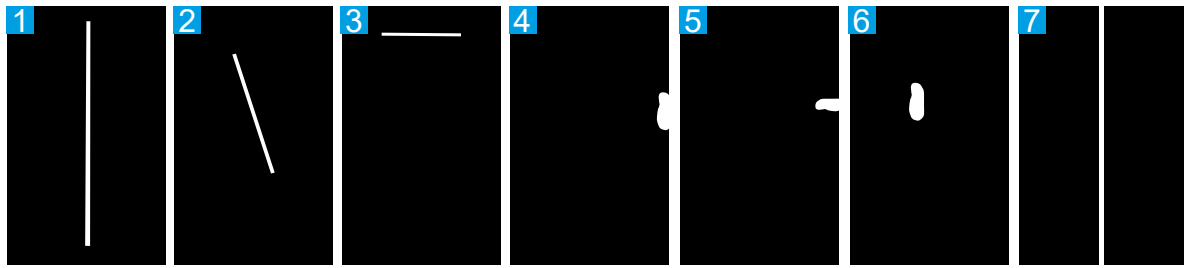


SELECTION CHART

FIX'N GO®

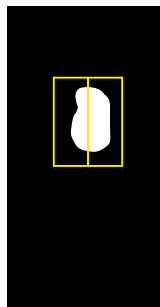
In which situations can we use FIX'N GO® ?

1. Longitudinal rips.
2. Crosswise rips under 50% of the belt width.
3. On each side, you must have 20% of the belt width.
4. Belt edge damage under 20% of the belt width.
5. Hole up to 10 cm wide in the edge of the belt (more than 3 cm : fill the hole before with a piece of belt).
6. Hole up to 20cm wide : (more than 3 cm : fill the hole before with a piece of belt).
7. Splicing of 2 belts together in the longitudinal direction (have 2 rows of screws on each side).



LEGEND

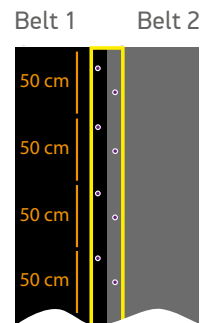
- Conveyor belt
- Hole / rip
- FIX'N GO®
- screws



If the hole is larger than FIX'N GO® :

Put side by side 2 widths of FIX'N GO® side by side.

These pieces will be installed along the direction of travel.



When longitudinally joining two belts :

Screw every 50cm on each belt. Alternate the screwing over the entire length.



Find the right screws according to your belt :

Thanks to the color code, find your reference of **FIX'N GO®**. According to your belt, find easily the right screws. If the screws are too long : **always grind them !**

For ABRASION RESISTANT, FIRE-RESISTANT or OIL-RESISTANT belts :

Skive the top cover with a blade of 4.5mm and the bottom cover with a blade of 2.5mm.

For heat RETARDANT belts :

Skive the top cover with a blade of 6.5mm and the bottom cover with a blade of 2.5mm.

ABRASION RESISTANT FIRE-RESISTANT OIL-RESISTANT	Choose the screw size in accordance with the type of your belt and in accordance with its cover thickness (mm)											
	Type of belt		3 + 1	4 + 1.5	5 + 1.5	4 + 2	5 + 3	6 + 2	6 + 3	8 + 3	10 + 3	
	250/2		5x10									
	315/2	315/3	5x10	5x10	5x10	5x10						
	400/2	400/3	5x10	5x10	5x10	5x10	5x12	5x12	5x12			
	500/3	500/4	5x10	5x10	5x12	5x10	5x12	5x12	5x12			
	630/2	630/3				5x10	5x12	5x12	5x12	5x14		
	630/4	630/5				5x12	5x12	5x12	5x14	5x16		
	800/2	800/3					5x12	5x12	5x12	5x16	5x18	
	800/4	800/5					5x14	5x14	5x14	5x16	5x18	
	1000/2	1000/3					5x14	5x14	5x14	5x16	5x18	
	1000/4	1000/5					5x14	5x14	5x16	5x18	5x20	
	1250/3	1250/4						5x16	5x16	5x18	5x20	
	1250/5	1250/6						5x16	5x16	5x18	5x20	

HEAT RETARDANT	Choose the screw size in accordance with the type of your belt and in accordance with its cover thickness (mm)											
	Type of belt		3 + 1	4 + 1.5	5 + 1.5	4 + 2	5 + 3	6 + 2	6 + 3	8 + 3	10 + 3	
	250/2		5x12									
	315/2	315/3	5x12	5x12	5x12	5x12						
	400/2	400/3	5x12	5x12	5x12	5x12	5x12	5x12	5x12			
	500/3	500/4	5x12	5x12	5x12	5x12	5x12	5x12	5x12			
	630/2	630/3				5x12	5x12	5x12	5x12	5x14		
	630/4	630/5				5x14	5x12	5x12	5x14	5x16		
	800/2	800/3					5x12	5x12	5x12	5x16	5x18	
	800/4	800/5					5x14	5x14	5x14	5x16	5x18	
	1000/2	1000/3					5x14	5x14	5x14	5x16	5x18	
	1000/4	1000/5					5x14	5x14	5x16	5x18	5x20	
	1250/3	1250/4						5x16	5x16	5x18	5x20	
	1250/5	1250/6						5x16	5x16	5x18	5x20	

■ Raise Scraper

PACKAGING

Two kits of FIX'N GO®

All **FIX'N GO®** are 158 mm wide and need 150 screws/meter. For each belt, skive the top cover with a blade of 4.5mm (or 6.5mm) and the bottom cover with a blade of 2.5mm

FIRST EMERGENCY KIT (2 METERS)



The kit contains :

- 2 meters of **FIX'N GO®** (the top and bottom parts),
- 2 x 300 screws (2 different sizes),
- Installation kit (10 longer screws + PZ bit).

PROFESSIONAL KIT (20 METERS)



The kit contains :

- 20m of **FIX'N GO®** (1 roller for the top part and 1 for the bottom part),
- With 3000 screws as following :
 - Abrasion resistant pack, fire resistant and oil resistant:
 - 600 screws 5 x 10 mm,
 - 900 screws 5 x 12 mm,
 - 600 screws 5 x 14 mm,
 - 300 screws 5 x 16 mm,
 - 300 screws 5 x 18 mm,
 - 300 screws 5 x 20 mm,
 - Heat retardant pack:
 - 1050 screws 5 x 12 mm,
 - 900 screws 5 x 14 mm,
 - 450 screws 5 x 16 mm,
 - 300 screws 5 x 18 mm,
 - 300 screws 5 x 20 mm,
- Installation kit (over-length screws + PZ bit)

Two types of steel for screws and inserts available



Steel screws and inserts

High resistance, it's the perfect choice for most situations:

Quarries Cement plants Mines and so on.



Stainless steel screws and inserts

A resistance in corrosive and saline environment.

Gold Mine, Phosphate Mine, Sorting Center, Fertilizer, and so on.



For any support in the installation of our products or in the resolution of problems on your conveyor belt, benefit from our **HOTLINE service** in real time.

Registration on www.mlt-lacing.com/mlt-hotline

Distributor logo

PATENTED PRODUCT
MADE IN FRANCE

 **MLT GROUP**
Conveyor Solutions Expert

 **MLT GROUP**
Minet Lacing Technology

 **TECHNICGUM**
MLT GROUP

www.mltgroup-conveyor.com - info@mltgroup-conveyor.com