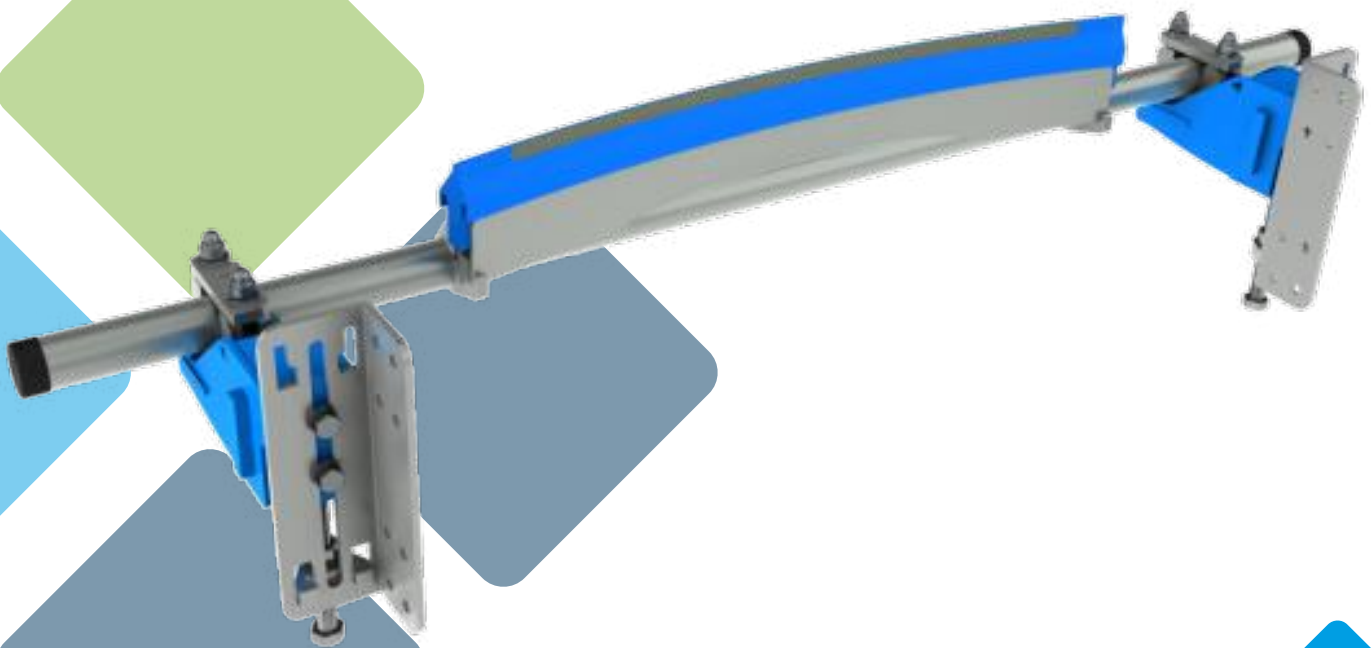




TECHNICGUM
MLT GROUP



RacloFlex  **Sw**

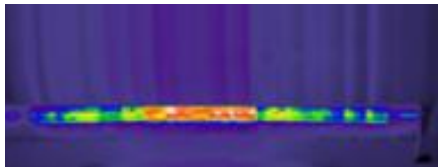
Belt scraper
Auto-adaptative curved
mono-blade secondary belt scraper

WHY CHOOSE THE RACLOFLEX SW ?

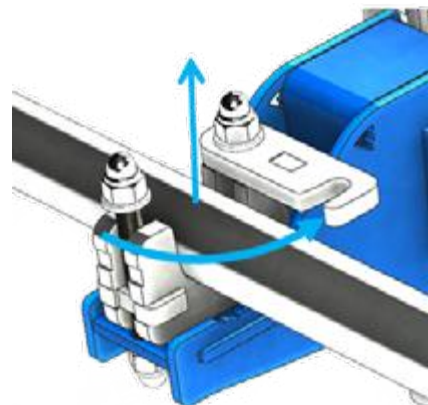
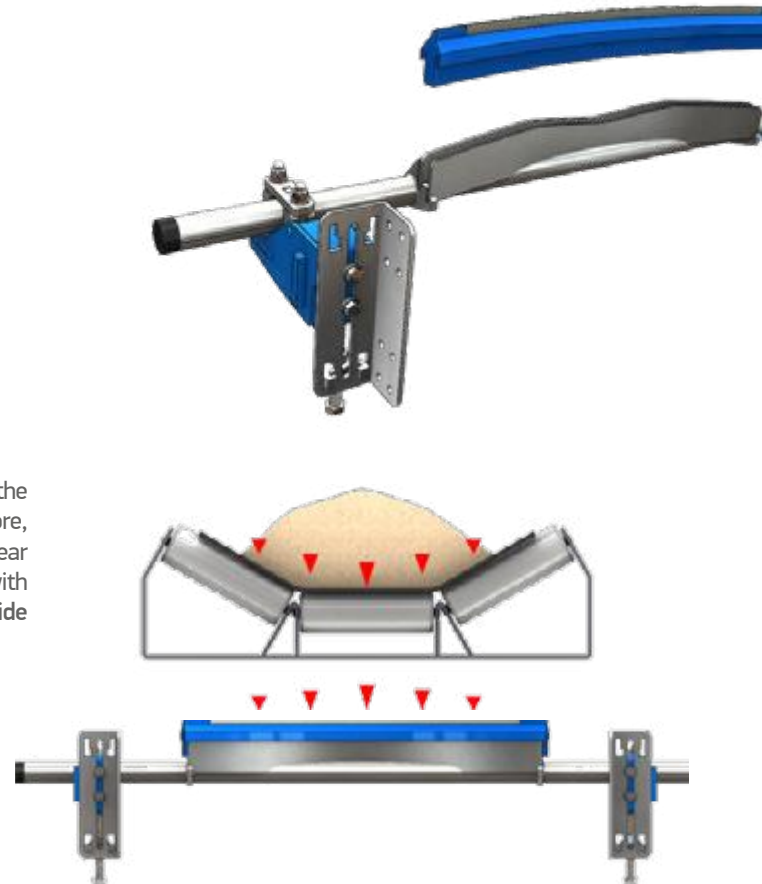
A unique and innovative scraper

❖ An ingenious system that adapts to your belt

The **RacloFlex Sw** has a blade with two inserts that transfers the lateral external pressures to an increased central pressure. Therefore, the scraper adapts automatically and compensates its wear continuously. This guarantees maximum efficiency and lifetime, with minimum maintenance. Standard features includes tungsten carbide 3x15mm high quality 93 HRa.



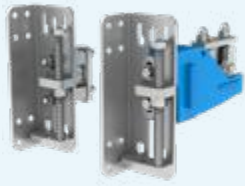
Thermal imaging system for scraping pressure



ADVANTAGES

- Easy installation
- Longer lifespan
- Anti-clogging design
- Minimum maintenance
- Fast opening bearing
- Easy and compact
- Galvanised metal parts
- Very high cleaning performance
- Curved blade attached without adjustment
- Very few screws
- Retractable pressure rod
- Solid mechanism for a reasonable weight
- Graduated shock absorbers, with cogs and non-return

❖ OPTIONS, ACCESSORIES AND VERSIONS



Pulling pressure

Allows the Scraper pressure to be adjusted from above and within the location angle.



Adjusting bracket

Enables you to cut and weld the support tube to reposition the blade with respect to the support mounts.



Special «MultiTool key»

Performs all the necessary functions for the manipulation and settings of the scraper.

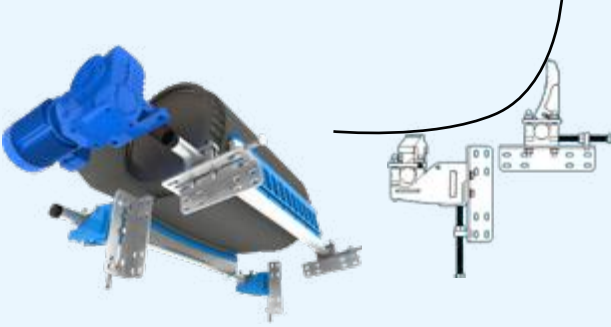
❖ General information for the RacloFlex Sw

| | |
|---------------------------|--|
| Blade Quality: | Tungsten Carbide : 93 HRA 3x15mm Or- Tungsten Carbide : 93 HRA 5x20mm Or- Impact Carbide : 66 HRA 5x10mm Or- Wear resistant Polyurethane : 25mm ³ svt DIN53516-10N |
| Working position: | Scraping angle = 90° (see notice) « spoon » blades and front shock absorbers |
| Surface treatment: | All electro-galvanized steel pieces or painted + A2 grade Stainless bolts |
| Temperature: | 0° / + 50° C |
| pH Range: | 3 to 11 |
| Maximum speed: | SW 1 way = 3 m/s SW -HD 1 way = 5 m/s |
| Avoid exposure to: | Impact and staples on tungsten carbide and ceramic Hot water steam : special quality available Corrosive atmosphere : Stainless Steel is possible on all or part Uncontrolled fouling on entire scraper |

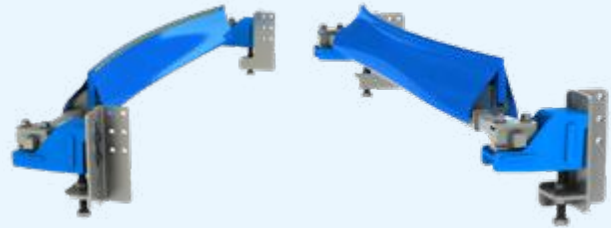
| | | | | | | | | | | | |
|---------------------------------|-----|-----|-----|-----|------|------|------|------|------|------|------|
| Belt, mm | 400 | 500 | 650 | 800 | 1000 | 1200 | 1400 | 1600 | 1800 | 2000 | 2200 |
| Scraping width SW, mm | 400 | 500 | 630 | 750 | 950 | 1150 | 1300 | | | | |
| Tungsten width SW, mm | 315 | 395 | 520 | 640 | 800 | 960 | 1120 | | | | |
| Scraping width SW-HD, mm | | | | | 950 | 1150 | 1300 | 1500 | 1700 | 1900 | 2100 |
| Tungsten width SW-HD, mm | | | | | 840 | 1040 | 1200 | 1400 | 1600 | 1800 | 2000 |

For any request of a scraper to suit greater than 2200 mm belt, the scraper will be manufactured to order.

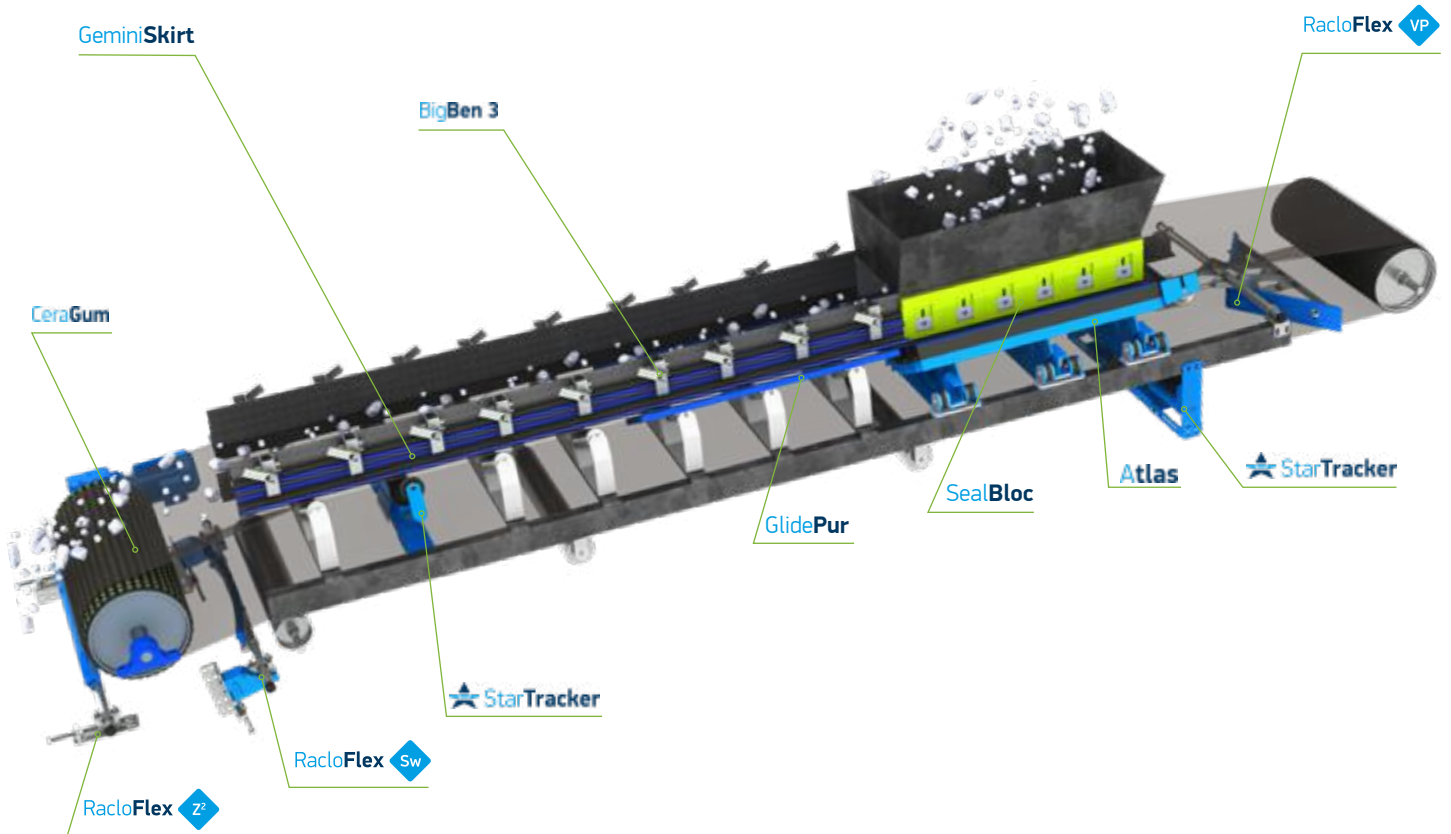
❖ Typical application of RacloFlex Z² in conjunction with a Primary Scraper



❖ RacloFlex Sw-HD



Heavy version **RacloFlex Sw HD** recommended for belts from 1400 to 2200 : Tungsten carbide 5x20, big flexible profiles and reinforced mechanism.



Distributor logo

MLT GROUP
Conveyor Solutions Expert

MLT GROUP
Minet Lacing Technology

TECHNIGUM
MLT GROUP

www.mltgroup-conveyor.com - info@mltgroup-conveyor.com